

***Professional Services  
Procurement Bulletin  
2008-02  
Shelby County—US 60***

<b><i>COUNTY</i></b>	<i>Shelby</i>
<b><i>ROUTE</i></b>	<i>US 60</i>
<b><i>DISTRICT</i></b>	<i>5—Louisville</i>
<b><i>ITEM NO</i></b>	<i>5-158.01</i>
<b><i>PROJECT DESCRIPTION</i></b>	<i>Reconstruct US 60, 60 from KY 53 in Shelbyville east to Shelby County High School., including improvements at the intersection of US 60 and KY 53 in Shelbyville</i>
<b><i>PROJECT MANAGER</i></b>	<i>Carl B. Jenkins III, P.E.</i>
<b><i>USER DIVISION</i></b>	<i>Highway Design</i>
<b><i>APPROXIMATE FEE</i></b>	<i>\$400,000—Preliminary Engineering (Phase I) \$700,000—Final Design (Phase II)</i>
<b><i>PROJECT FUNDING</i></b>	<i>State Funds (SP)</i>
<b><i>PURPOSE AND NEED</i></b>	<i>Improve safety, traffic operation and reduce congestion by reconstructing US 60 from KY 53 in Shelbyville east to Shelby County High School, and also by completing improvements at the intersection of US 60 and KY 53 in Shelbyville.</i>
<b><i>PROJECT LENGTH</i></b>	<i>Approximately 1.6 miles</i>
<b><i>METHOD OF DESIGN</i></b>	<i>The selected consultant shall utilize the CADD Standards for Highway Plans (version 2.08) policy in the development of the Highway Plans.</i>
<b><i>DBE REQUIREMENT</i></b>	<i>None</i>

<b>SCOPE</b>	<i>The purpose of the design contract is to provide location and Phase I, and Phase II Roadway Design for the reconstruction of US 60. The selected Consultant will provide engineering services for Phase I and Phase II roadway design, including surveying, drainage design, traffic control, erosion control, Advanced Situation Folders, Corps of Engineers permit drawings, preliminary and final roadway construction plans with construction cost estimates. Phase II units will be negotiated at the end of Phase I after receiving environmental approval.</i>
<b>SPECIAL INSTRUCTIONS</b>	<i>None</i>
<b>AVAILABLE STUDIES</b>	<i>None</i>
<b>PHOTOGRAMMETRIC SERVICES</b>	<i>The Department will provide aerial photography and will furnish manuscripts in DGN format to the selected consultant.</i>
<b>STRUCTURE DESIGN</b>	<i>The selected consultant shall do the necessary engineering services to determine the preliminary sizes of the bridges and other drainage structures. Structure design will be performed by Department. Pre-qualification in the area of structure design is not required to be identified in the consultant's Response to Announcement.</i>
<b>GEOTECHNICAL SERVICES</b>	<i>Department</i>
<b>TRAFFIC</b>	<i>The Department will provide historical traffic information and any projections needed.</i>
<b>ENVIRONMENTAL</b>	<i>The Consultant will be responsible for the preparation of an environmental overview.</i>
<b>UTILITY DESIGN</b>	<i>None</i>
<b>MAP</b>	<i><u>Static Map</u> <u>Interactive Map</u></i>

## ***PREQUALIFICATION REQUIREMENTS***

### **ROADWAY DESIGN**

- *Rural Roadway Design >\$250,000*
- *Urban Roadway Design >\$250,000*
- *Surveying*

### **ENVIRONMENTAL ARCHAEOLOGY AND OTHER SERVICES**

- *Prehistoric*
- *Historic*
- *Highway Noise*
- *Air Quality*
- *Cultural Historic*
- *Environmental Document Writing and Coordination*
- *Socioeconomic*

### **AQUATIC/TERRESTRIAL ECOSYSTEMS**

- *Fisheries*
- *Macroinvertebrates*
- *Water Quality*
- *Botany*
- *Zoology*
- *Wetlands*

### **HAZMAT/UST**

- *Preliminary Site Assessment*

***PROJECT SCHEDULE & MILESTONES***

<b><i>RESPONSE DATE</i></b>	<i>September 12, 2007 4:30 p.m. (Frankfort Time)</i>
<b><i>SELECTION COMMITTEE DATE MEETING</i></b>	<i>October 3, 2007</i>
<b><i>PRE-DESIGN CONFERENCE</i></b>	<i>October 15, 2007</i>
<b><i>TENTATIVE DEADLINE FOR CONSULTANT FEE PROPOSAL</i></b>	<i>November 12, 2007</i>
<b><i>CONTRACT NEGOTIATIONS</i></b>	<i>December 3, 2007</i>
<b><i>NOTICE TO PROCEED</i></b>	<i>February 4, 2008</i>
<b><i>PRELIMINARY LINE &amp; GRADE INSPECTION</i></b>	<i>June 1, 2008</i>
<b><i>FINAL JOINT INSPECTION</i></b>	<i>October 1, 2008</i>
<b><i>RIGHT OF WAY PLANS</i></b>	<i>February 1, 2009</i>
<b><i>FINAL PLANS</i></b>	<i>June 1, 2009</i>

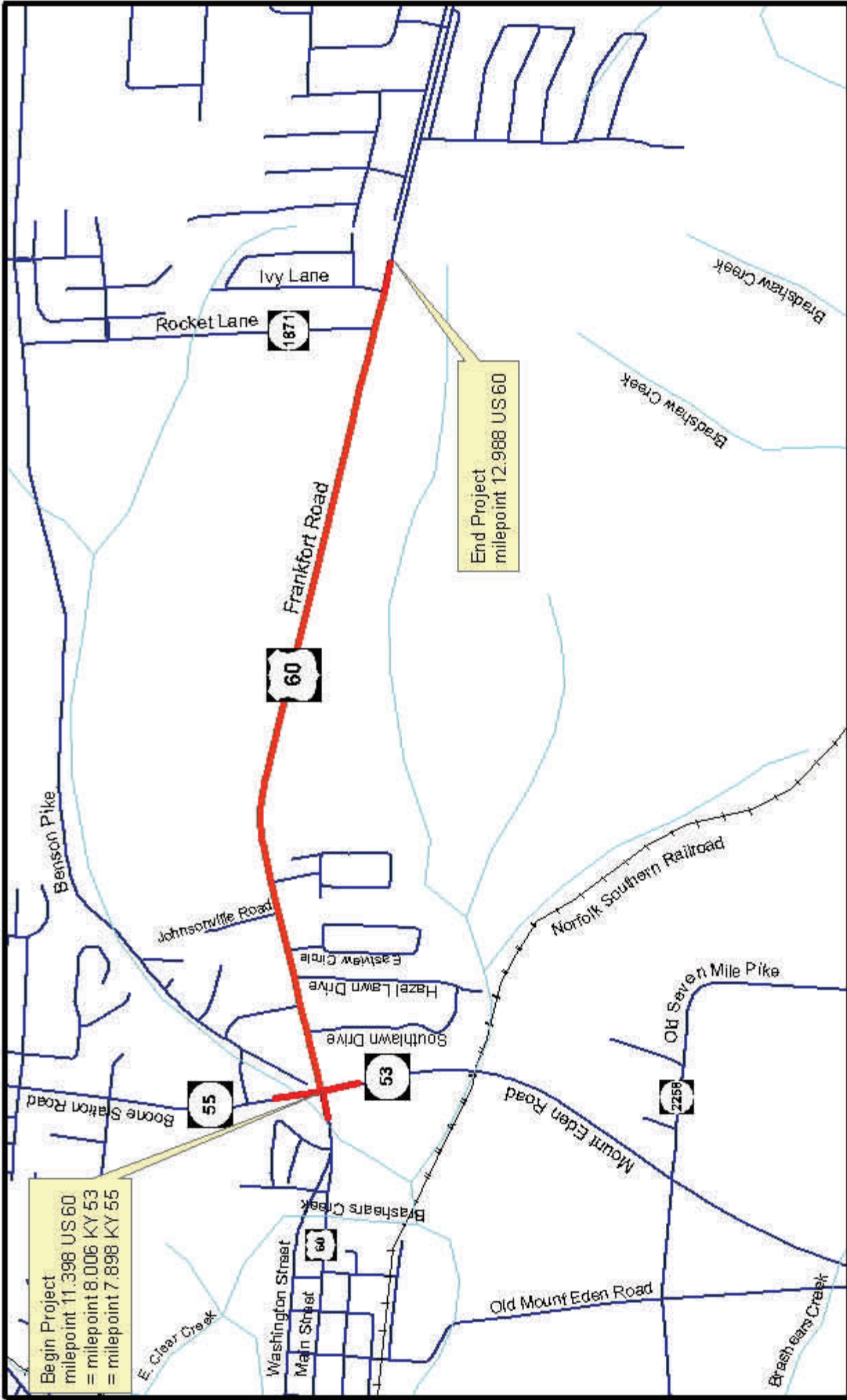
*The selected consultant is expected to meet the scheduled milestone dates*

## **EVALUATION FACTORS**

- 1. Relative experience of consultant personnel assigned to project team with highway projects for KYTC and/or for federal, local or other state governmental agencies. (10 points)*
  - 2. Capacity to comply with project schedule. (10 points)*
  - 3. Past record of performance on projects of similar type and complexity. (10 points)*
  - 4. Project approach and proposed procedures to accomplish the services for the project. (10 points)*
  - 5. Consultant's Kentucky office where work is to be performed. (2 points)*
- 75% - 100% of work accomplished in Kentucky offices - 2 points*
- 26% - 74% of work accomplished in Kentucky offices - 1 point*
- 0% - 25% of work accomplished in Kentucky offices - 0 points*

## **SELECTION COMMITTEE MEMBERS**

- 1. Carl B. Jenkins III, P.E., User Division*
- 2. Robert Farley, P.E., User Division*
- 3. Ed McCracken, Secretary's Pool*
- 4. Matt Bullock, Secretary's Pool*
- 5. Howard Cruse, Governor's Pool*



ITEM NO. 5-158.01

US 60

SHELBY COUNTY, KENTUCKY

